



## Product Data Sheet

# 1085T-N

Surface mount contact with screw terminals

### Easy Installation

Sentrol 1085T series is ideal for residential and commercial applications where terminal connections are preferred. The unit features positive clamping terminals with anti-rotation lugs and captured screws with combination heads. These features allow for easy, quick installations.

### Comprehensive Range

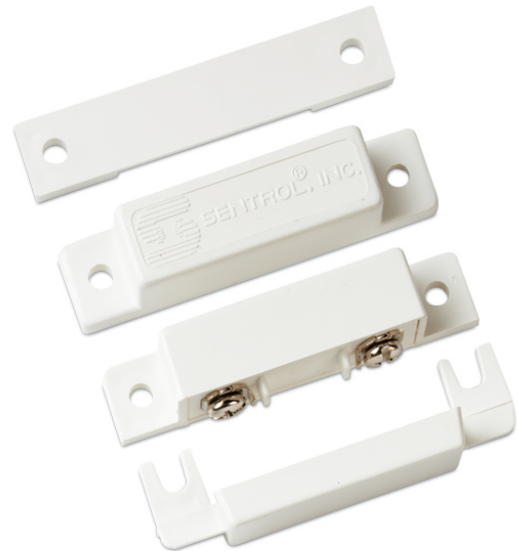
The range includes wide gap, SPDT and biased version for higher security. This makes it one of the most popular contacts available in the industry today.

### Durability and dependability

The Sentrol high performance magnetic contacts have been designed to facilitate installation and ensure durability and dependability. Most are conservatively rated at 10,000,000 cycles, guaranteeing a long life. Every reed connection is hand soldered and each magnetic contact is tested before they leave the factory, 100% of the time.

### High quality components and materials

Reed legs are plated with rhodium or ruthenium, and hermetically sealed in dry nitrogen. This offers superior protection against sticking and provides a moisture free environment therefore preventing corrosion.



### Standard Features

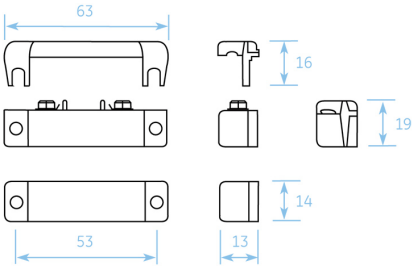
- Easy clamping terminal speed installation
- Cover, spacer included
- Ideal for residential and commercial
- Convenient surface mounting
- Versions with built-in 3K3 resistors available

# 1085T-N

Surface mount contact with screw terminals

## Specifications

Gap distance (max)	19 mm
Connections	Screw terminals
Contact	NC
Supervised loop	No
Dimensions (L x W x H)	63 x 13 x 19 mm
Color	White



## Ordering Information

Part No.	Description
1085T-N	Surface mount contact with screw terminals, white